

Mathematics Curricular Flowchart

Common Course Number (CCN)

The following courses were renumbered beginning in Summer 2009

new	old
Math& 107	⇒ 107
Math& 141	⇒ 115
Math& 142	⇒ 116
Math& 146	⇒ 210
Math& 148	⇒ 112
Math& 151	⇒ 124
Math& 152	⇒ 125
Math& 153	⇒ 126
Math& 254	⇒ 225

Note: Common course numbers are marked with an ampersand "&". For example, "Math& 146" is a CCN.

Which Precollege Class?

The typical student who places into pre-college math classes (classes numbered less than 100) follows the sequence:

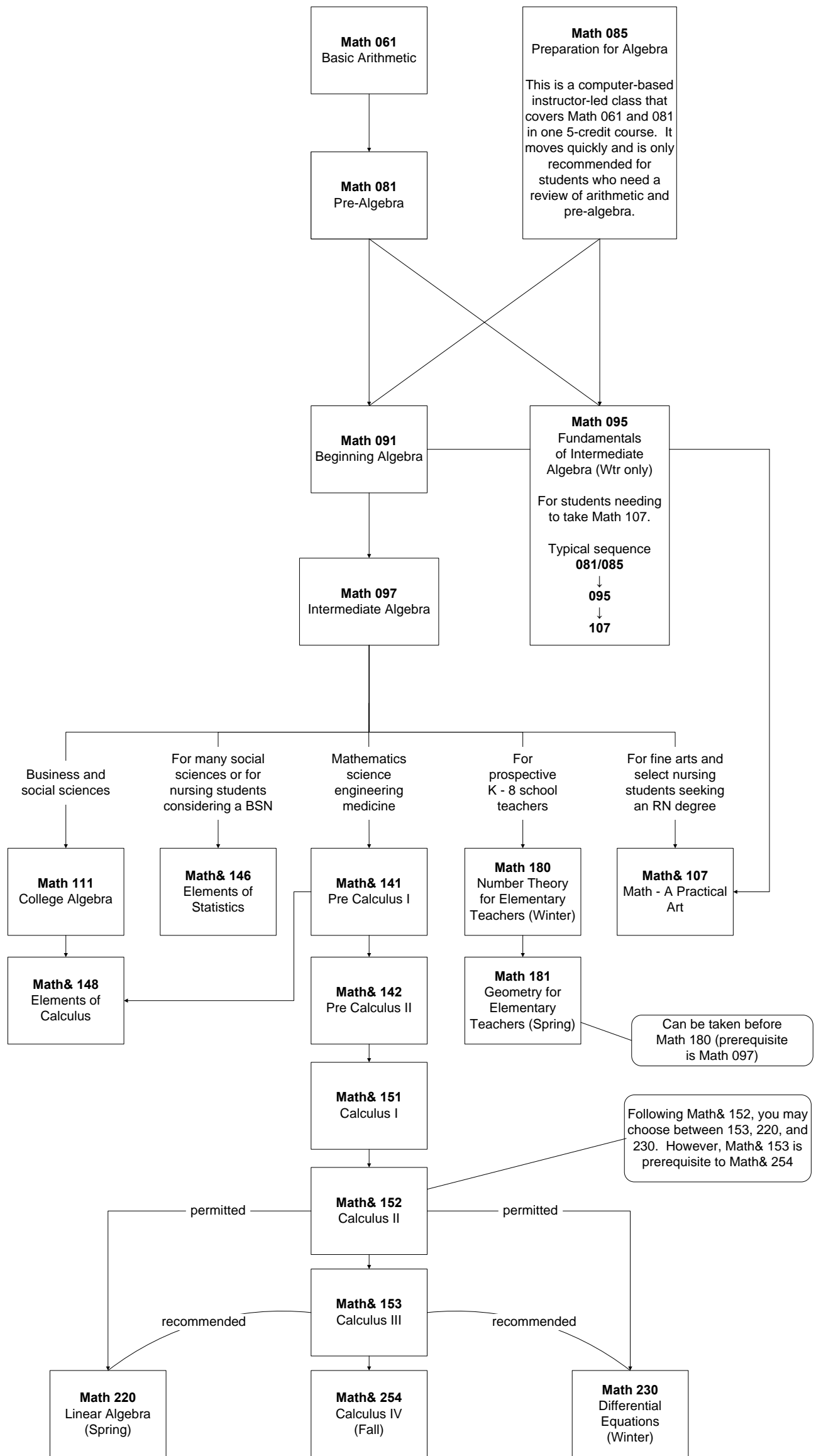
Math 081 → 091 → 097

or

Math 085 → 091 → 097

After Math 097, students can choose from a variety of courses depending upon their intended major and career path.

Classes below this point meet the quantitative skills requirement for the AA degree



This flow chart is designed to answer frequently questions and guide along common academic paths, but it cannot fully replace the assistance provided by a helpful mathematics instructor, academic advisor (bldg 6), or discipline specific advisor.

Please ask your mathematics instructor or in the advising center for more personalized assistance.

For more information, visit the mathematics faculty whose offices may be found in buildings 15, 18, and 29. Or visit our website:

<http://flightline.highline.edu/math>

updated
Spring 2009